

EXECUTIVES PROGRAM OVERVIEW

The Premier Program for Executives

The Master of Legal Studies degree is for professional advancement through the study of law. Created for those without a need or interest in becoming a lawyer, this degree provides access to the top legal education in the world. With a priority on flexibility and convenience, this part-time program is suitably designed for the working professional.

PART-TIME MLS PROGRAM STRUCTURE

PHASE 1

Core Curriculum
 5 classes

* 26 units are required to graduate

PHASE 2

Specialization
 3 - 5 classes

PHASE 3

Capstone
 1 class

SPECIALIZATIONS

Business Law
 Entertainment & Media Law
 Employment & Human Resources Law
 Environmental Law
 General Studies

Government & National Security Law
 Health Law & Policy
 Law & Technology
 Public Interest Law

* A student may elect "General Studies" and flexibly take courses from any specialization

TIME INVESTMENT	1 Course/Semester*	2 Courses/Semester*
Average hours/week of classroom instruction	3	6
Average hours/week of study time	6	12
Total average hours/week	9	18

* Students may choose the number of courses to register for each semester. 2 courses/semester paces towards 2 years to graduate, 1 course/semester paces towards 4 years to graduate.

TUITION

Average tuition cost/year if completed over 3 years: \$19,800*

Optional 6 units (27-32) are TUITION FREE! \$13,560 value.

* The part-time program can be completed in 2-4 years. This is an estimate based on the tuition rate at \$2260/unit for 2021/2022. About \$900/semester in university fees. If a student does not have qualifying health insurance, campus provided Health Insurance is required @ \$2,360/semester.

SCHOLARSHIPS

Bruin Scholarship: Awarded in amounts of \$5k, \$9k, or \$12k

Blue & Gold Scholarship: Awarded in amounts of \$5k, \$10k, or \$20k

Government & Non-Profit Leader Scholarship: Awarded in amounts of \$5k, \$9k, or \$12k

UC & CSU Employee Scholarship: Guaranteed \$14,000

For more information, see [full program brochure](#)

MASTER OF LEGAL STUDIES

Part-Time Student Timeline Year 1

ACCEPTANCE

See website for application deadlines & decision release dates

CONNECTION

January-June
>Optional online & in-person events

optional:
1-2 hours / week

PREPARATION

July-August
>Law School Fundamentals Workshops (online)

1-2 hours / week

ORIENTATION

Mid-August
>On campus, full week

Only week that is full time

FALL SEMESTER

Late August to early December
>Flexible classes on campus in the evenings

1 course:
9 hours / week
2 courses:
18 hours / week

HOLIDAY BREAK
Mid-December to late January

SPRING SEMESTER

Early January
>Optional J-term classes
Late January to mid-May
>Flexible classes on campus in the evenings

1 course:
9 hours / week
2 courses:
18 hours / week

Year 2 (3 & 4 if necessary)

SUMMER BREAK

Mid-May to Late August
>3 months off
>Connection events

0 hours / week

FALL SEMESTER

Late August to early December
>Elective options ranging from morning to evening with limited online electives available

1 course:
9 hours / week
2 courses:
18 hours / week

HOLIDAY BREAK
Mid-December to late January

SPRING SEMESTER

Early January
>Optional J-term classes

Late January to mid-May
>Elective options ranging from morning to evening with limited online electives available

1 course:
9 hours / week
2 courses:
18 hours / week

COMMENCEMENT

Mid-May



LAURA KIRPIN

Founder of Suncani Consulting LLC. Employment & Human Resources Law

“I am an experienced HR professional with my own consulting firm. One of my MLS classmates recently became the CEO of a clean-energy IoT company. He needed a better grasp on HR functions within the company and reached out to me. After a brief conversation, I was hired! I work as the sole HR practitioner in refining the existing policies/procedures and improving the company culture. An amazing challenge! The MLS program enabled this opportunity for me.”

EXECUTIVES



Master of Legal Studies

Student Class Profile of Executives

C-suite professionals, vice presidents and those in equivalent positions; those with 10 or more years of industry experience

AVERAGE AGE

43

Age range: 28-72



35

UNDERGRADUATE
INSTITUTIONS REPRESENTED

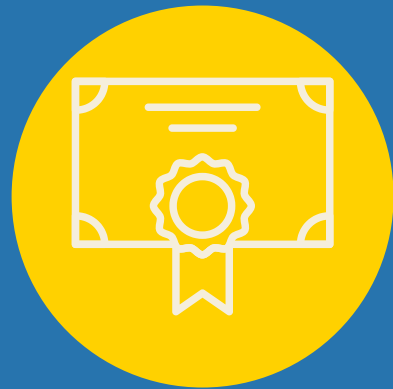


48

ORGANIZATIONS
REPRESENTED

ADVANCED DEGREE HOLDERS

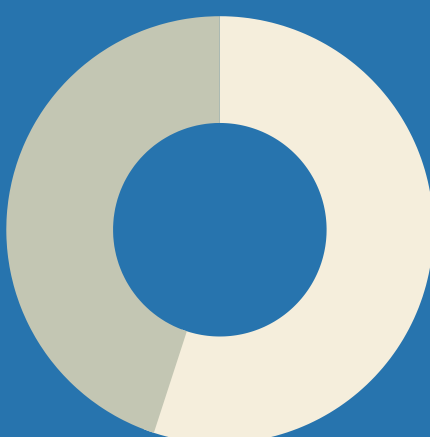
43%



HISTORICALLY UNDERREPRESENTED GROUPS

45%

45%
MALE



55%
FEMALE